



OFFICE SPACE FULL FLOOR - 11,750 SF

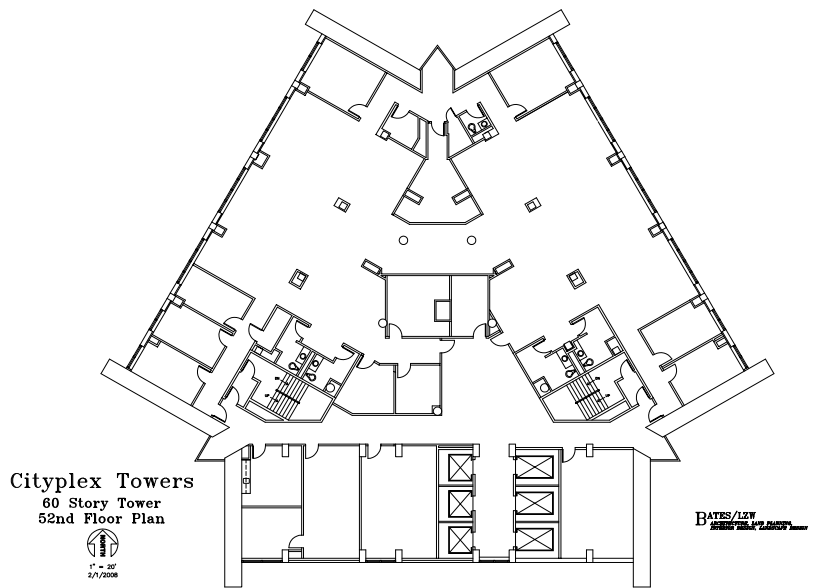
AS OKLAHOMA'S LARGEST OFFICE CENTER, CITYPLEX TOWERS OFFERS A WIDE VARIETY OF AMENITIES YOU JUST CAN'T FIND ELSEWHERE.

- ATTRACTIVE RATES
- LARGE FLOOR PLATES
- ABUNDANT PARKING
- POWERFUL INFRASTRUCTURE
- 24/7 OPERATIONS
- DUAL ENTRANCE SONET RING FIBER OPTICS TO BUILDING
- STATE-OF-THE-ART EMERGENCY AND SECURITY SYSTEMS WITH PROFESSIONAL LIFE SAFETY TEAM
- NEWLY REMODELED, MULTI-LEVEL LOBBY WITH PUBLIC WIFI ACCESS
- VARIETY OF FOOD SERVICE OPTIONS (*PIZZA HUT, 81ST STREET BISTRO, HAVA JAVA, SUNDRIES STORE*)
- ONSITE STORAGE FACILITIES
- COMMON MEETING AREAS AND AUDITORIUMS
- ONSITE BANKING AND ATM
- DAY CARE CENTER ON PROPERTY
- NEWLY REMODELED FITNESS CENTER WITH 1/7-MILE RUNNING TRACK
- SUPERIOR ONSITE PROPERTY/REAL ESTATE MANAGEMENT

FOR LEASING INFORMATION, PLEASE CONTACT:

Derek Bateman - 918.493.8470
derek.bateman@tulsatrinity.com

Cityplex Towers
2488 East 81st Street, Suite 188
Tulsa, Oklahoma 74137
www.cityplextowers.com



- 11,750 rsf on 52nd floor, 60 story tower
- Excellent reception area off of elevator
- Benefit of full-floor presence/identity
- Expandable; contiguous available space on floors above and below
- \$13.00 full service rate (*includes utilities and janitorial services*)
- Excellent elevator and curb access

Professionally Leased and Managed By:
www.tulsatrinity.com

